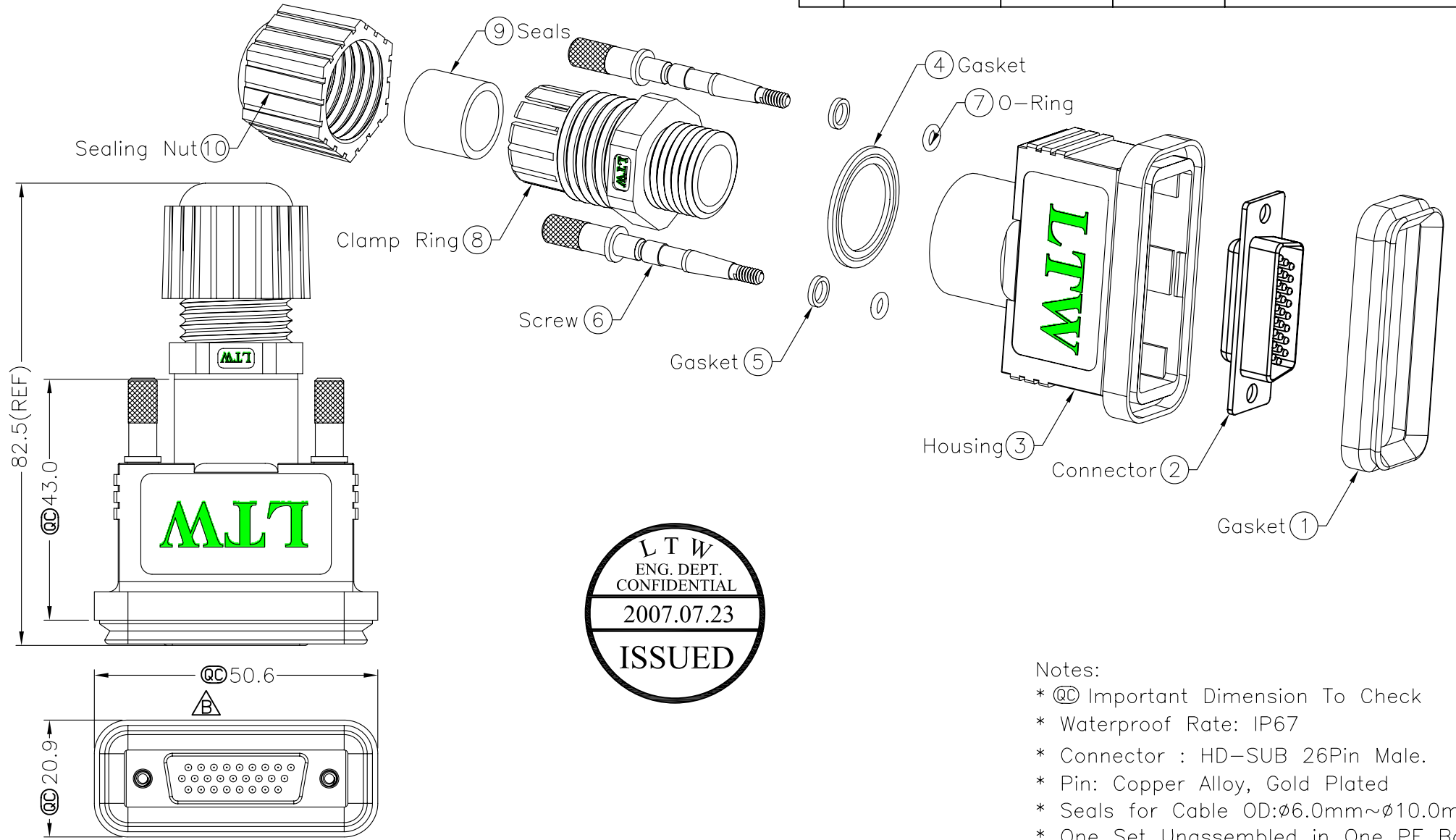


REV	ECN NO.	DATE	SIGN	DESCRIPTION
B	LEN-770343	2007/07/16	Robert Hsu	Correct pin layout



- Notes:
- \* Ⓞ Important Dimension To Check
  - \* Waterproof Rate: IP67
  - \* Connector : HD-SUB 26Pin Male.
  - \* Pin: Copper Alloy, Gold Plated
  - \* Seals for Cable OD:ϕ6.0mm~ϕ10.0mm
  - \* One Set Unassembled in One PE Bag

UNIT:mm TOLERANCE ±0.5mm	TITLE HD-SUB Conn. Assy Screw HD26Pin M Conn. M Pin	L T W 亮泰企業股份有限公司	ITEM NO LTWHDB-26BMMA-SL7001	DRAWN BY Robert Hsu	DATE 2007/07/16
	SCALE Free		SHEET 1 OF 1	DWG NO LTWHDB-26BMMA-SL7001	CHECKED BY Jill
REV. B	SIZE A4	QC : Inspection Item	CUSTOMER	APPROVED BY Lion-Yu	DATE 2007/07/16

THIS DOCUMENT IS SUBJECT TO CHANGE WITHOUT NOTICE. IT IS CONFIDENTIAL AND A PROPERTY OF LTW. DISCLOSURE TO THIRD PARTY HAS TO BE AUTHORIZED BY LTW.