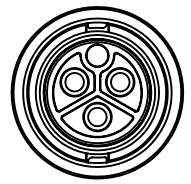
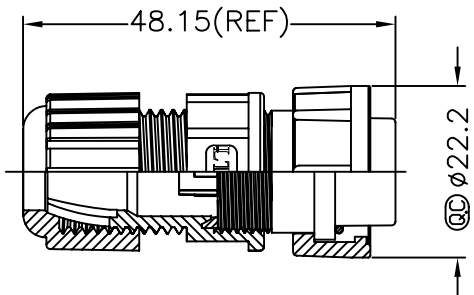
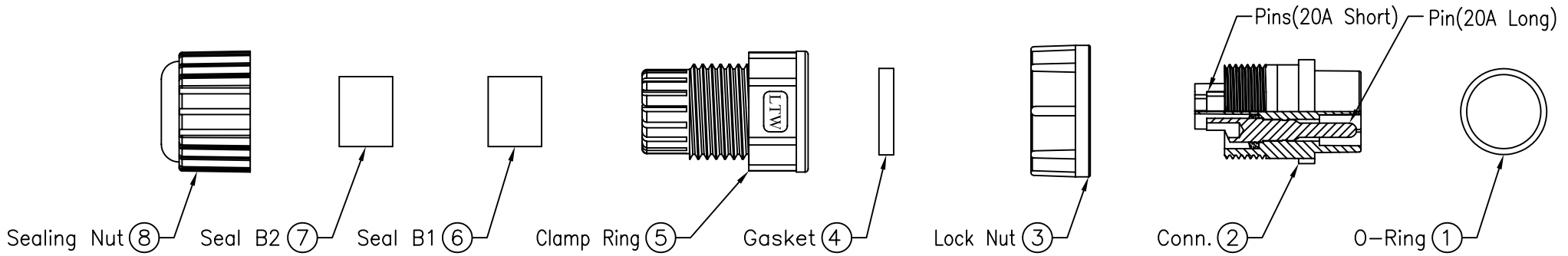


5	6	7	8
REV. B	ECN NO. LEN-020039	DATE 2010/01/20	SIGN Vicky
			DESCRIPTION Remove Note.

THIS DOCUMENT IS SUBJECT TO CHANGE WITHOUT NOTICE. IT IS CONFIDENTIAL AND A PROPERTY OF LTW. DISCLOSURE TO THIRD PARTY HAS TO BE AUTHORIZED BY LTW.

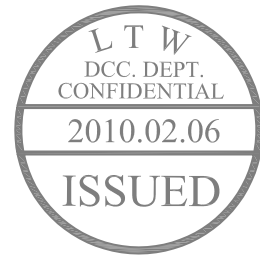


Conn.

- Note:**
- \* @C Important Dimensions To Check.
  - \* Waterproof Rate: IP67.
  - \* Housing: Nylon+GF, Black.
  - \* Male Pin: Copper Alloy, Gold Plated.
  - \* O-Ring: Silicon, Gray.
  - \* Lock Nut: Nylon+GF, Black.
  - \* Gasket: Silicon, Gray.
  - \* Clamp Ring: PPO, Black.
  - \* Sealing Nut: Nylon+GF, Black.
  - \* Seal B1 For Cable OD:  $\phi 7.6\text{mm} \sim 9.6\text{mm}$ .
  - \* Seal B2 For Cable OD:  $\phi 4.0\text{mm} \sim 7.6\text{mm}$ .
  - \* One Set Unassembled In One PE Bag.



Pin Assignments  
Front View



UNIT:mm		TITLE	Power, Assy Lock 3Pins F Conn. M Pin 20Amps		<b>LTW</b> 亮泰企業股份有限公司	ITEM NO	LTWPWC-03BFMA-LL7001	DRAWN BY	Vicky	DATE	2010/01/20
TOLERANCE	$\pm 0.5 \text{ mm}$	SCALE	Free	SHEET 1 OF 1		DWG NO	LTWPWC-03BFMA-LL7001	CHECKED BY	Rita	DATE	2010/01/20
		REV.	B	SIZE A4		CUSTOMER		APPROVED BY	Lion	DATE	2010/01/20