

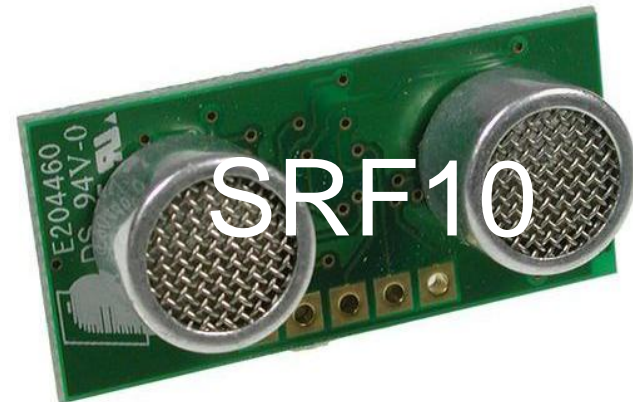
Running SRF08/SRF10 on RoBoard



DMP Electronics Inc
Robotic Division
February 2012

Overview

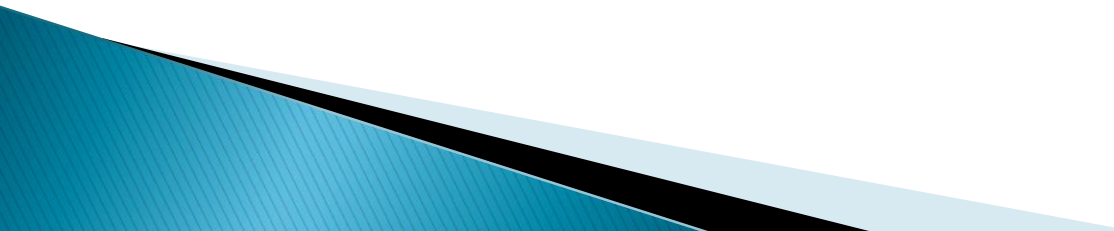
- ▶ Use RoBoard to read Ultrasonic Range Finder SRF08/SRF10.



- ▶ The following will explain how to connect SRF10 to RoBoard. And the connections to the SRF08 are identical to the SRF10, so we won't show it.



Outline

- ▶ Pin Definition of SRF08/SRF10
 - ▶ Connect SRF10 to RB-100/RB-100RD
 - ▶ Connect SRF10 to RB-110
- 

Pin Definition of SRF08/SRF10



Pin Definition of SRF08

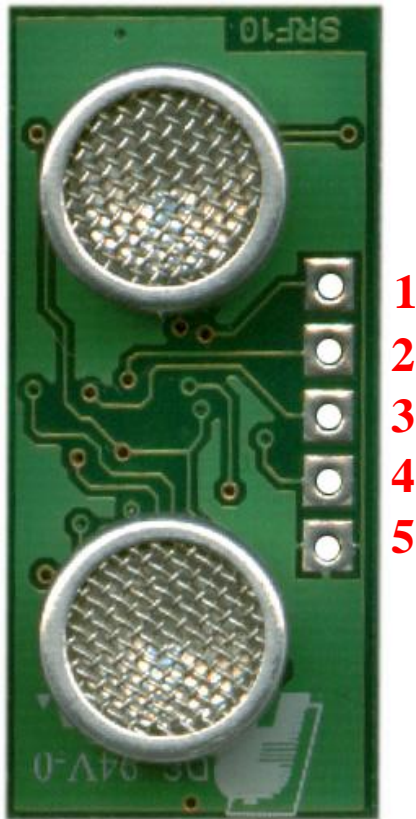
► Pin function of SRF08



Pin #	Function
1	V _{cc} (5V)
2	SDA
3	SCL
4	Do Not Connect
5	GND

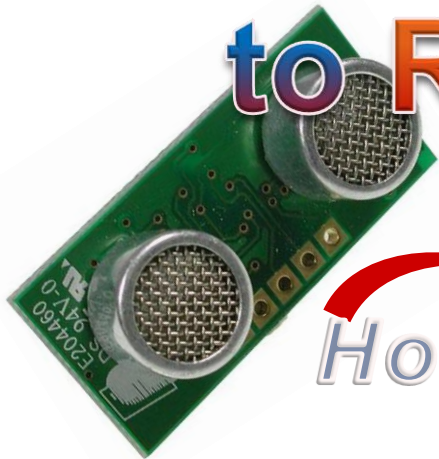
Pin Definition of SRF10

► Pin function of SRF10



Pin #	Function
1	V _{cc} (5V)
2	SDA
3	SCL
4	Do Not Connect
5	GND

Connect SRF10 to RB-100/RB-100RD

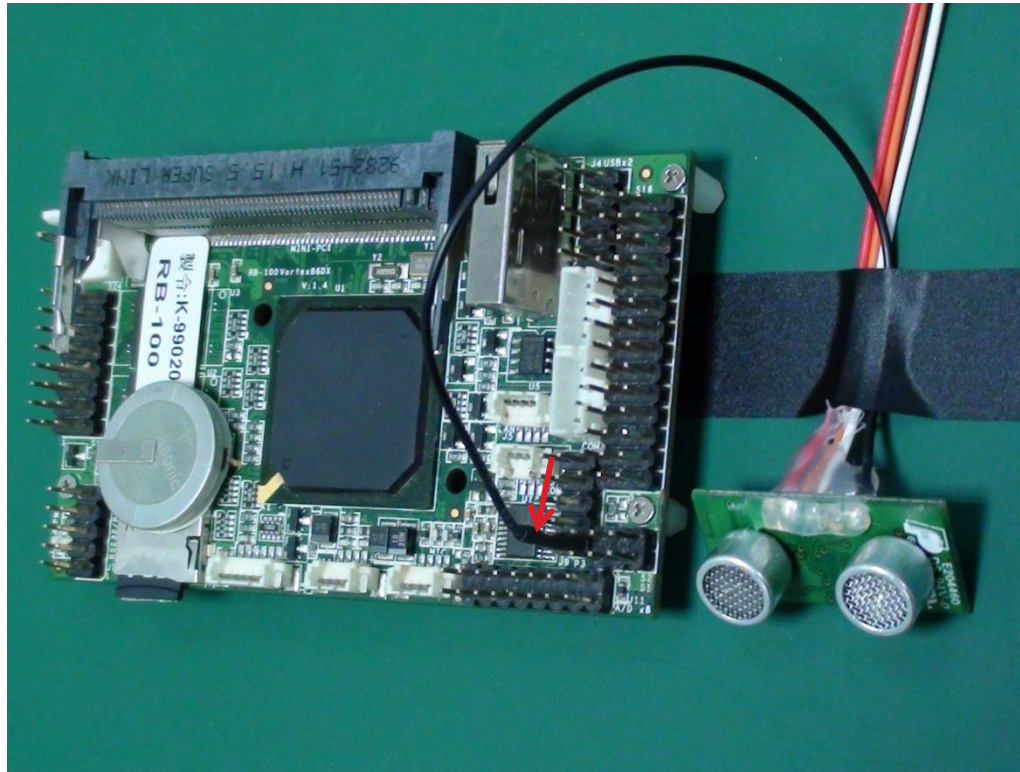


How to?



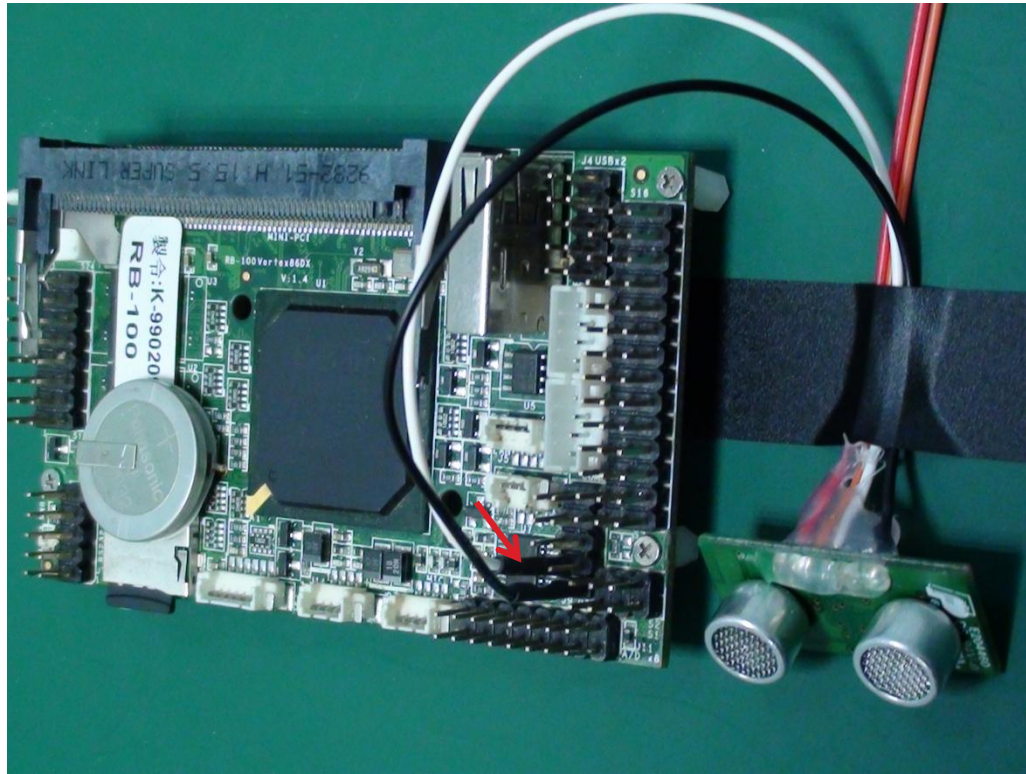
Connect Step 1.

- ▶ Connect **GND** of SRF10 to **GND** pin of RoBoard SPI/I²C connector.



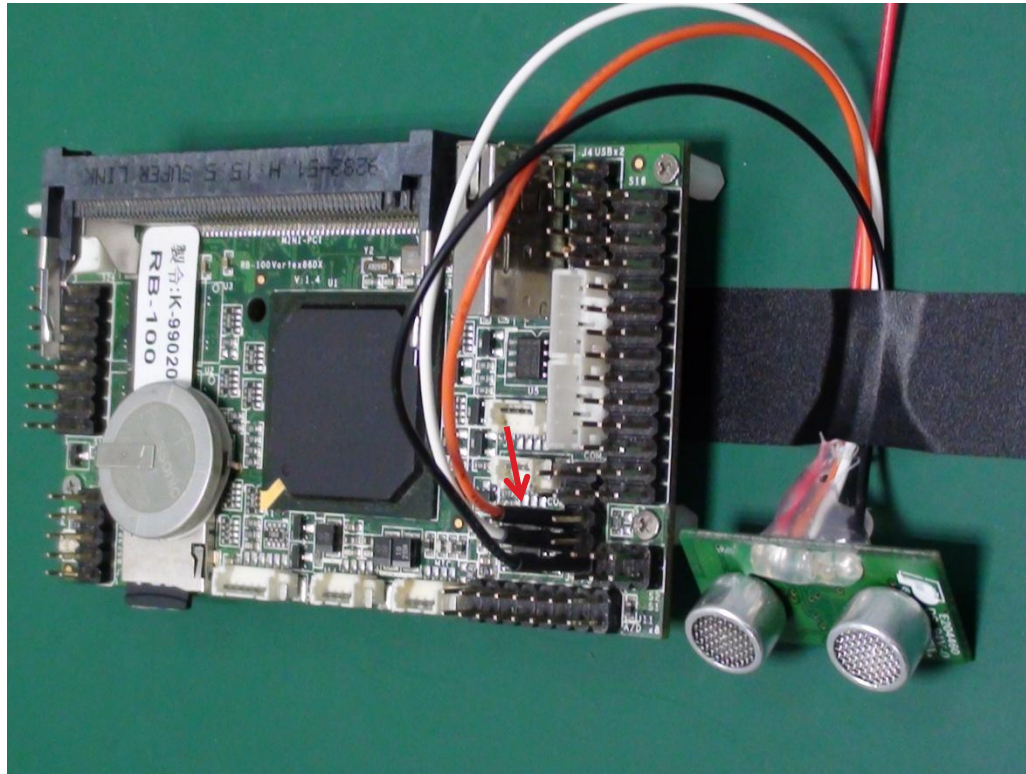
Connect Step 2.

- ▶ Connect **SCL** of SRF10 to **SCL** pin of RoBoard SPI/I²C connector.



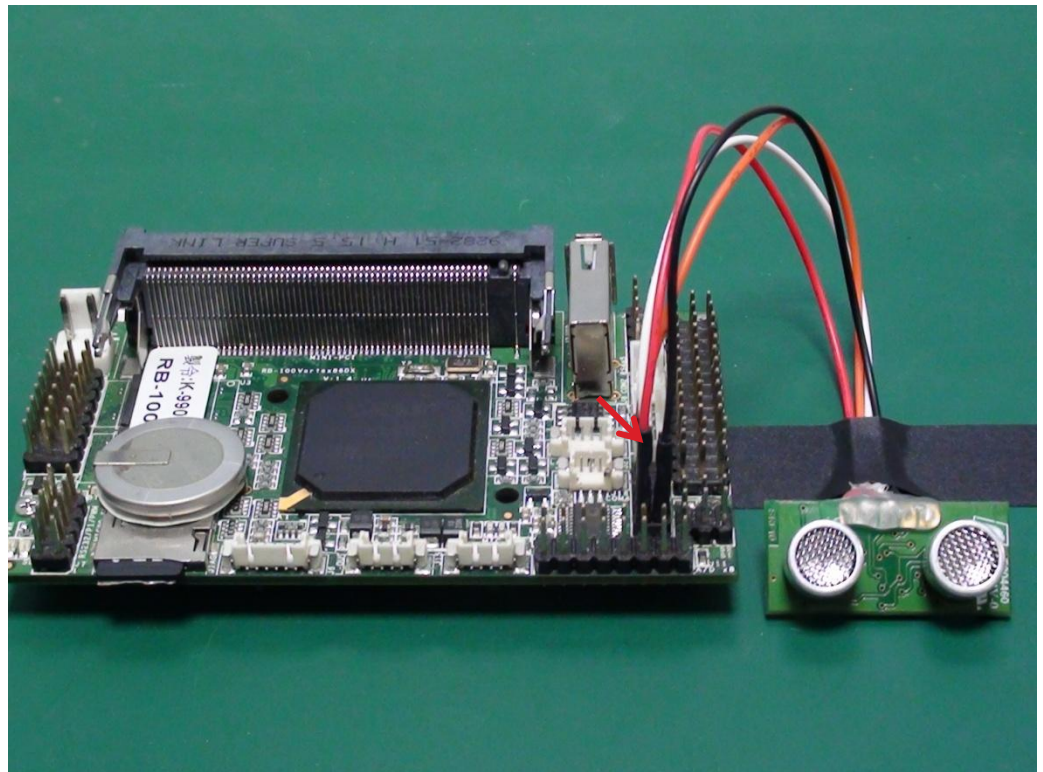
Connect Step 3.

- ▶ Connect **SDA** of SRF10 to **SDA** pin of RoBoard SPI/I²C connector.

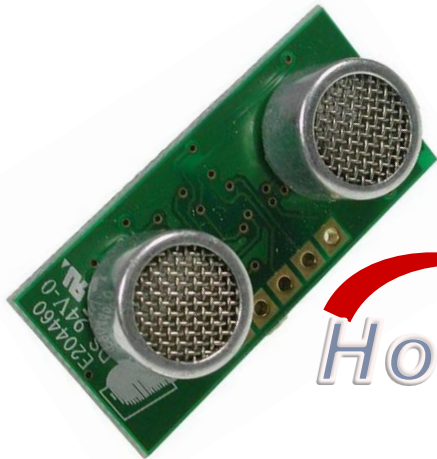


Connect Step 4.

- ▶ Connect V_{cc} of SRF10 to V_{cc} pin of RoBoard SPI/I²C connector. And now you have connected SRF10 to RoBoard successfully.



Connect SRF10 to RB-110

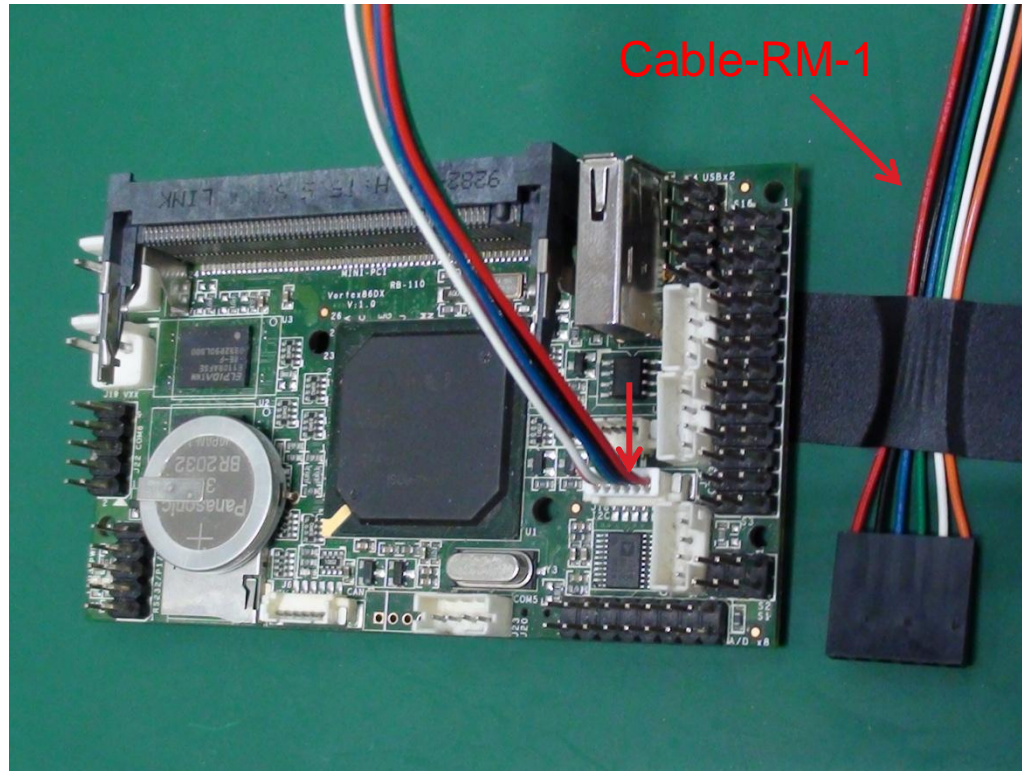


How to?



Connect Step 1.

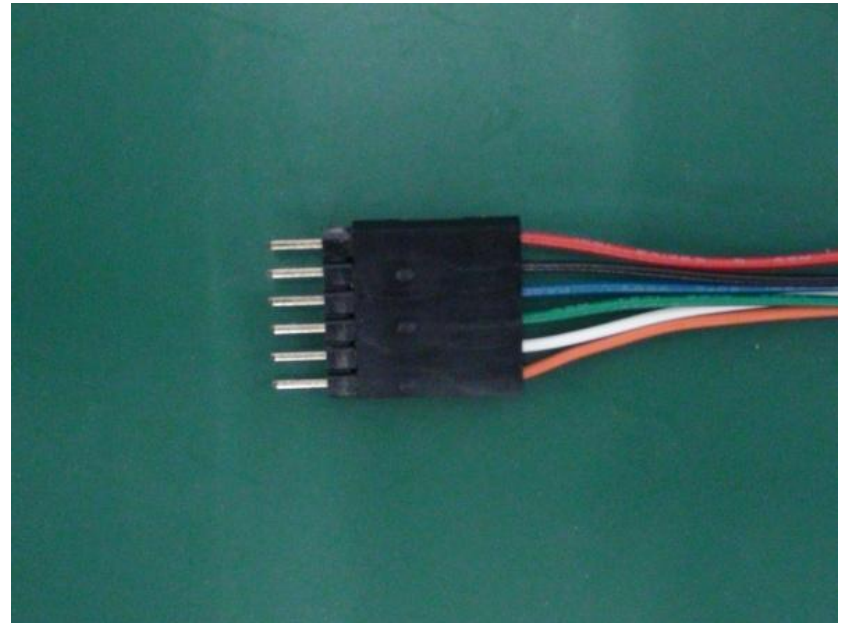
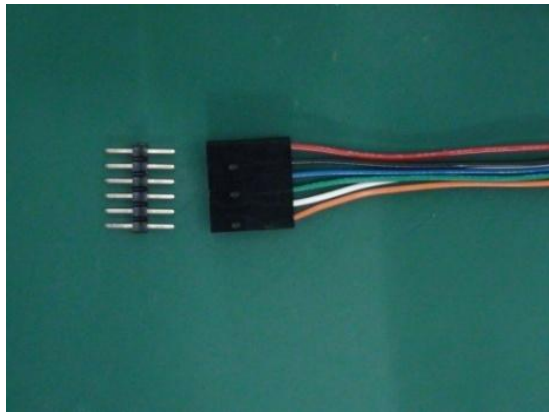
- ▶ Plug a **Cable-RM-1** on I²C connector of RB-110.



- Note: **Cable-RM-1** is the cable from every RoBoard Module (e.g., RM-G144 or RM-G146) Kit.

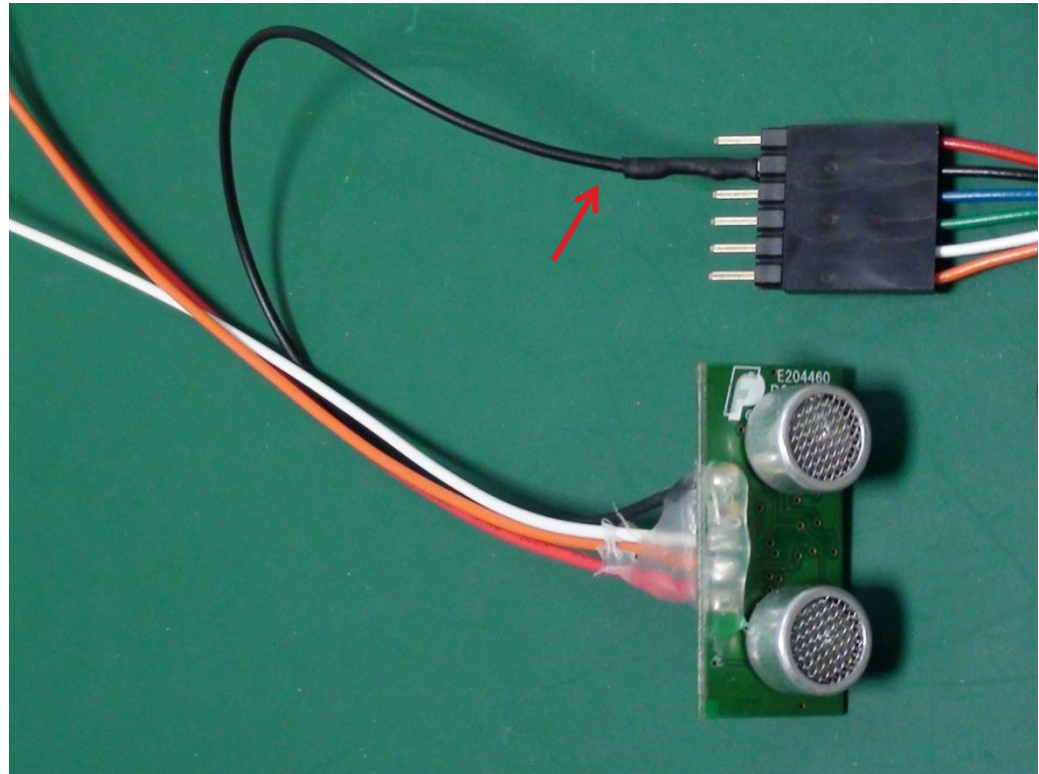
Connect Step 2.

- ▶ Plug a 1x6 2.54mm pin header on the header of Cable-RM-1.



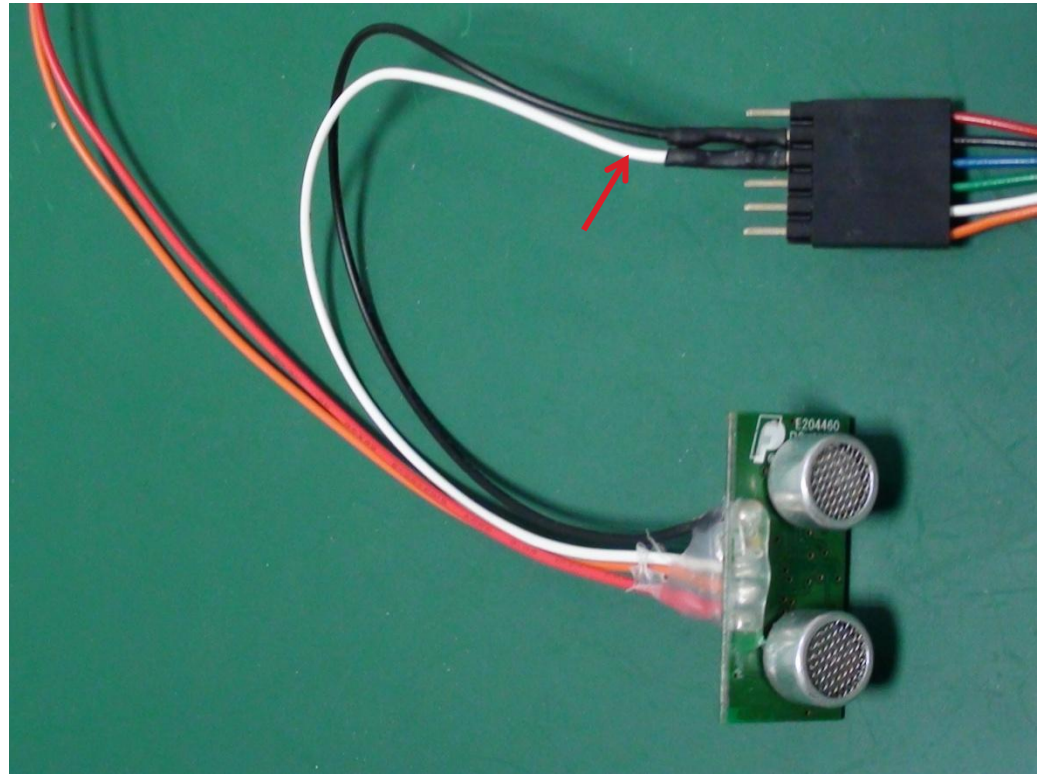
Connect Step 3.

- ▶ Connect **GND** of SRF10 to the **GND** pin of RoBoard I²C connector (i.e., black line of **Cable-RM-1**).



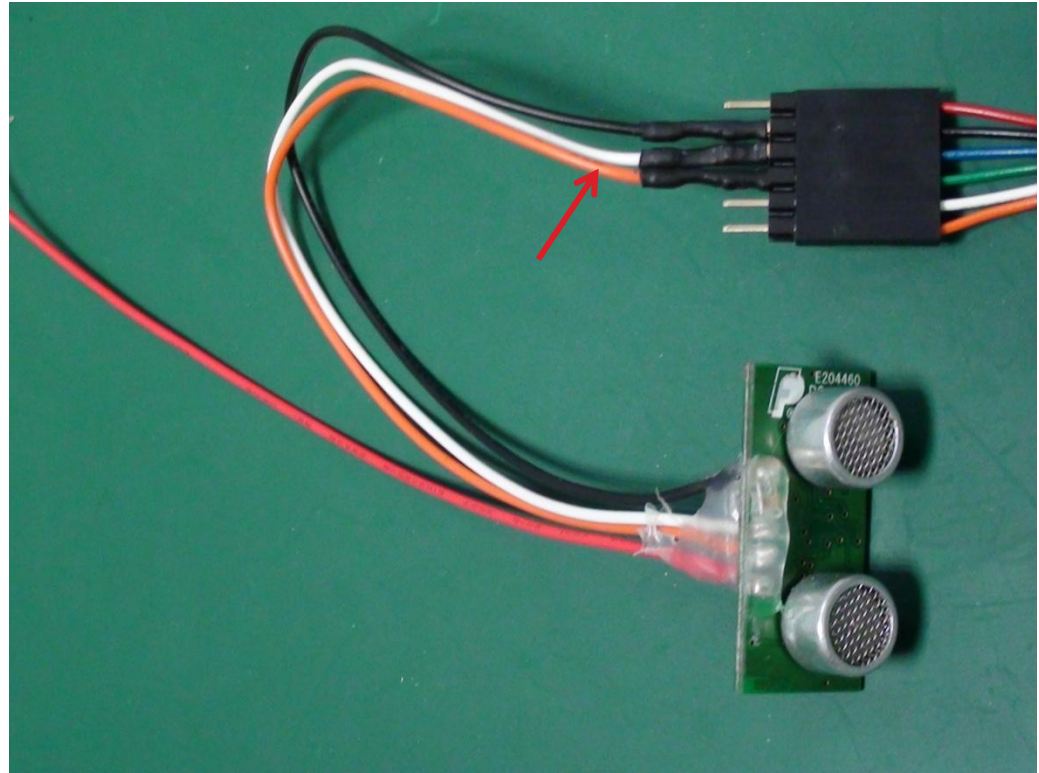
Connect Step 4.

- ▶ Connect **SCL** of SRF10 to the **SCL** pin of RoBoard I²C connector (i.e., blue line of **Cable-RM-1**).



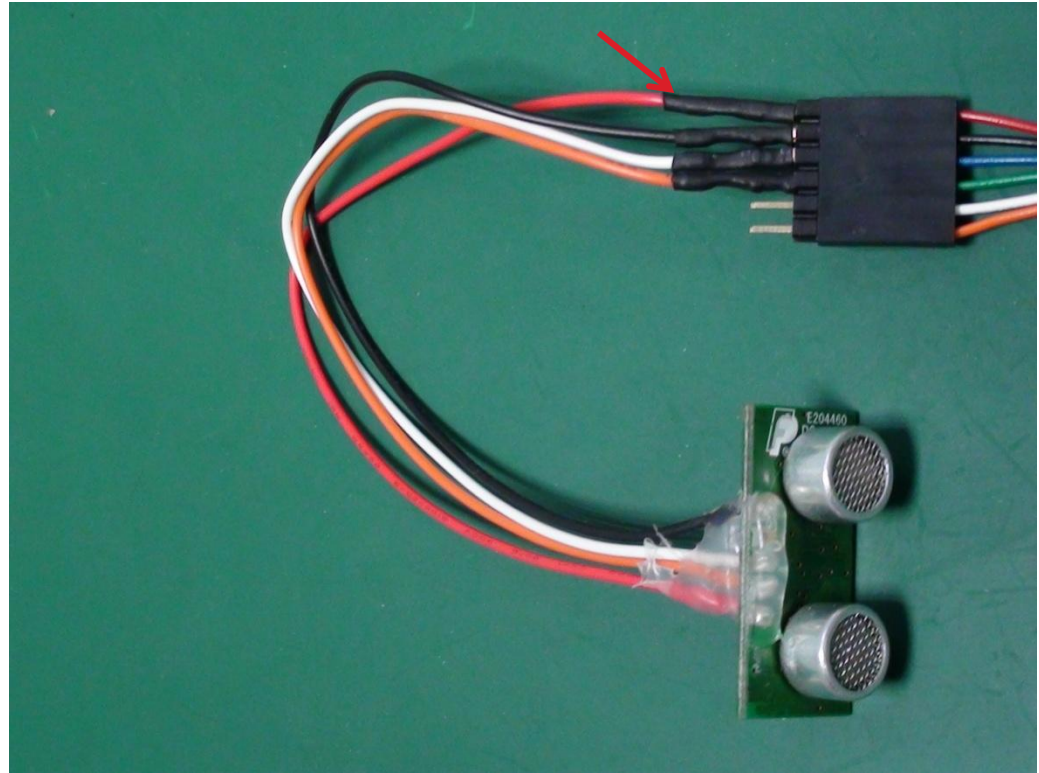
Connect Step 5.

- ▶ Connect **SDA** of SRF10 to the **SDA** pin of RoBoard I²C connector (i.e., green line of **Cable-RM-1**).



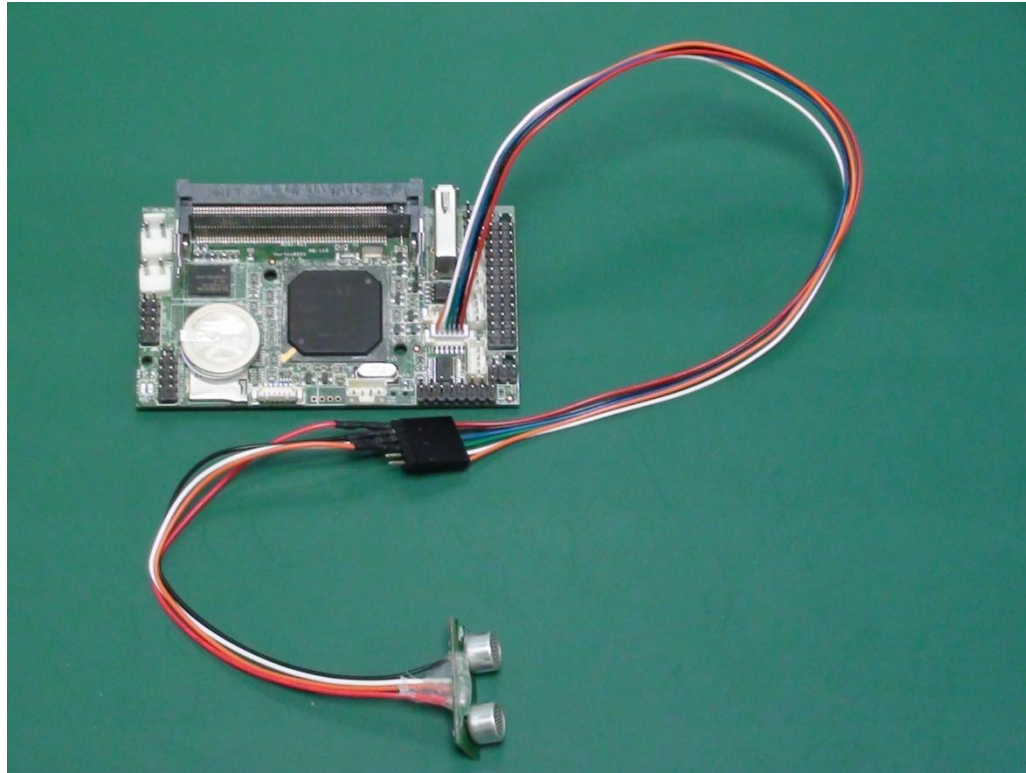
Connect Step 6.

- ▶ Connect V_{cc} of SRF10 to the V_{cc} pin of RoBoard I²C connector (i.e., red line of Cable-RM-1).



Connect Step 7.

- ▶ Now you have connected SRF10 to RoBoard RB-110 successfully.



The Heart of Robotics

Thank you

tech@roboard.com
<http://www.roboard.com>